

FLEX TUBING

Insulated Flex (25' Box)

<u>Code</u>	<u>Size</u>	<u>List Price</u>
IF3	3"	30.23
IF4	4"	28.08
IF5	5"	32.77
IF6	6"	36.38
IF7	7"	42.69
IF8	8"	46.46
IF9	9"	56.77
IF10	10"	63.00
IF12	12"	77.69
IF14	14"	94.62
IF16	16"	106.92
IF18	18"	125.38
IF20	20"	152.69



Insulated Flex

* Skid Quantity Pricing Available - Please Call

Insulated Sleeve R -4.2 For Round Duct

<u>Code</u>	<u>Size</u>	<u>List Price</u>
JV0410	4" x 10 FT	15.38
JV0510	5" x 10 FT	17.34
JV0610	6" x 10 FT	18.95
JV0710	7" x 10 FT	21.83
JV0810	8" x 10 FT	23.98
JV0910	9" x 10 FT	25.38
JV1010	10" x 10 FT	27.31
JV1210	12" x 10 FT	29.06



Insulated Sleeve

Nylon Ties

<u>Code</u>	<u>Size</u>	<u>Package</u>	<u>List Price</u>
TY24	24"	50 pcs	0.38
TY36	36"	50 pcs	0.45
TY48	48"	50 pcs	1.06



Inland Metal

Sheet Metal Manufacturers & Custom Fabricators
Wholesale Heating Supplies

Prices subject to change
without notice

FLEX DUCT

FOIL FLEX (25 FT LENGTH) UL181 / ULC S-110M CLASS 1

<u>CODE</u>	<u>DESCRIPTION</u>	<u>LIST PRICE</u> <u>PER FOOT</u>	<u>LIST PRICE</u> <u>PER BOX</u>
APS3	3" x 25 ft. (Box)	0.96	24.00
APS4	4" x 25 ft. (Box)	1.00	23.08
APS5	5" x 25 ft. (Box)	1.10	25.77
APS6	6" x 25 ft. (Box)	1.30	29.62
APS7	7" x 25 ft. (Box)	1.50	35.08
APS8	8" x 25 ft. (Box)	1.65	38.08
APS9	9" x 25 ft. (Box)	2.15	50.00
APS10	10" x 25 ft. (Box)	2.25	51.92
APS12	12" x 25 ft. (Box)	2.65	61.92
APS14	14" x 25 ft. (Box)	3.90	90.38
APS16	16" x 25 ft. (Box)	4.75	118.31
APS18	18" x 25 ft. (Box)	4.95	128.46



TECHNICAL DATA

OPERATING PRESSURE

Positive Pressure 10" W.C. Intermittent (2.5 KPA)
Positive Pressure 6" W.C. Continuous (1.5 KPA)
Negative Pressure 2" W.C. Continuous (0.5 KPA)
Velocity (Feet per minute)
4000 F.P.M. (20 m / sec)

OPERATING TEMP. RANGE

@ 6" W.C. Min. -20° F (-28° C)
Max 140° F (60° C)
@ 2" W.C. Min. -20° F (-28° C)
Max 180° F (82° C)
@ 1/2" W.C. Max 250° F (121° C)

Inland Metal

Sheet Metal Manufacturers & Custom Fabricators
Wholesale Heating Supplies

Prices subject to change
without notice

DESIGN POLYMERICS

DUCT SEALER

Hi-Velocity Water Base Grey Sealer

<u>CODE</u>	<u>DESCRIPTION</u>
DP1010-12	1/2 Gallon Water Base - Grey
DP1010-1	1 Gallon Water Base - Grey
DP1010-2	2 Gallon Water Base - Grey
DP1010-5	5 Gallon Water Base - Grey
DS12	10 oz. Tubes Water Base - Grey



<u>LIST PRICE</u>
20.38 / 1/2 GAL
28.46 /EA
56.69 / 2 GAL
141.54 / 5 GAL
3.85 /EA

Spray Application

<u>CODE</u>	<u>DESCRIPTION</u>	<u>LIST PRICE</u>
DP1010-5S	5 Gallon Water Base - Grey (Spray Application)	34.62 /GAL

INSULATION ADHESIVE

Duct Liner Adhesive

<u>CODE</u>	<u>DESCRIPTION</u>
DP2502-1	1 Gallon Water Base (White)
DP2502-5	5 Gallon Water Base (White)
DP2502-50	50 Gallon Water Base (White)



<u>LIST PRICE</u>
23.46 /GAL
101.15 / 5 GAL
1015.38 /DRUM

Duct Liner Edge Coating

<u>CODE</u>	<u>DESCRIPTION</u>	<u>LIST PRICE</u>
DP88	16 oz Spray Can (1 can) (12 Cans Per Case)	15.84

<u>CODE</u>	<u>DESCRIPTION</u>	<u>LIST PRICE</u>
DP3050	1 Gallon Water Based Lagging Adhesive	24.00
DP30502	2 Gallon Water Based Lagging Adhesive	48.00

Duct Liner

<u>CODE</u>	<u>DESCRIPTION</u>	<u>LIST PRICE</u>
DL147	Duct Liner 1" x 47" x 100 FT Roll	343.85
DL159	Duct Liner 1" x 59" x 100 FT Roll	431.54
DL247	Duct Liner 2" x 47" x 50 FT Roll	P.O.A.

*Note: Skid Quantity Pricing Available - Please Call

Inland Metal

Sheet Metal Manufacturers & Custom Fabricators
Wholesale Heating Supplies

Prices subject to change
without notice

MCGILL AIRSEAL

DUCT SEALER

<u>CODE</u>	<u>DESCRIPTION</u>		<u>COLOR</u>	<u>LIST PRICE</u>
US1	United Duct Sealer (Solv) U.L. Listed 1 Gal Gold Can;HVAC Indoor/Outdoor -40 to +40 w.g.		Gold	60.38
USD1G	Uni-Seal Duct Sealer (Solv) U.L. Listed 5 Gal Bronze Can; HVAC Indoor -40 to +40 w.g.		Bronze	45.00
UDST29	United Duct Sealer (Water Based) Indoor/Outdoor -40 to +40 W.G.	29 oz. Tube	Grey	15.00
UF1G	Uni-Flex Duct Sealer (Water Based) Copper Can -10 to +10 W.G.	1 Gallon 1 Case (4 Gal.)	Grey	30.16 28.65
UF10.5	Uni-Flex Duct Sealer	10 oz. Tube		4.62
UTA5G	Uni-Tack Duct Liner Adhesive (Water Based) 5 Gallon Pail; U.L. Listed	1 - 2 Pails 3 or more Pails	White	139.62 132.64
UTAD	Uni-Tack Duct Liner Adhesive (Water Based) 52 Gallon Drum; U.L. Listed	1 Drum (52 Gal) 2 Drums (52 Gal) 4 / Skid (52 Gal)	White	1338.46 1271.54 1204.61

LARGE QUANTITY DISCOUNTING AVAILABLE, PLEASE CALL

Inland Metal

Sheet Metal Manufactures & Custom Fabricators
Wholesale Heating Supplies

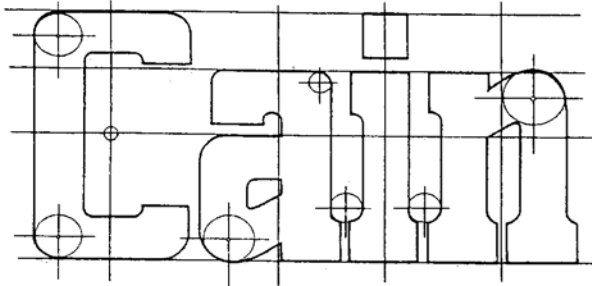
Prices subject to change
without notice



Inland Metal

Sheet Metal Manufacturers & Custom Fabricators
Wholesale Heating Supplies

Prices subject to change
without notice



Flexible Duct Connector

How to select the proper type of Flexible Duct Connector for your installation!

To meet every type of application requirement, Cain has developed the **FABRIC SELECTION CHART** for a quick comparison of the many types of fabric currently available. Whether for institutional, factory, office or residential, Cain offers just the right fabric.** Cain Duct Connectors are pre-assembled with the (24 gauge or 28 gauge*) sheet metal permanently secured to fabric by means of Cain "Flex-Loc" or optional "S-Loc" seam locks.

Cain Flexible Duct Connectors are produced in continuous coils of 50', 100' or 150' long and are shipped in convenient dispenser cartons.

Any questions remaining may be answered by your local factory representative, or call Cain direct, to talk with our engineers.

** Cain metals meet ASTM 924/653
Many Cain fabrics are ISO 9000 approved.
* Some products, also available in aluminum or stainless.



Inland Metal

Sheet Metal Manufacturers & Custom Fabricators
Wholesale Heating Supplies

Prices subject to change
without notice

FABRIC SELECTION CHART

CANFLEX (CANVAS) TRADITIONAL DUCT FABRIC	FLEXLON (HYPALON/FIBERGLASS) IDEAL OUTDOORS HIGH VELOCITY	GLASSTITE (VINYL/FIBERGLASS) GENERAL PURPOSE LOW/MED VELOCITY	HYPALON (HYPALON/POLYESTER) ALL WEATHER HIGH VELOCITY
<p>CANFLEX is a canvas fabric which is fire retardant, waterproof and mildew proof. It will not burn or support combustion and will only char when exposed to a flame. Air leakage is virtually eliminated by its close weave and the finish will not wash out.</p>	<p>FLEXLON is a heavy glass fabric, coated on both sides with white hypalon. Fabric is non-combustible and coating is flame proof. Has excellent weathering quality and is waterproof. Resistant to ozone, acids, alkalis, gasoline and grease.</p>	<p>GLASSTITE is a glass fabric sealed airtight and watertight with a vinyl coating, both sides. The glass fabric is non-combustible and the coating flame retardant. Resistant to acids, alkalis, gasoline and grease.</p>	<p>HYPALON is a polyester fabric with a heavy hypalon coating on both sides. Airtight and watertight fabric has outstanding resistance to weathering, ultraviolet radiation, ozone and is not affected by mildew.</p>
<p>Listed by Underwriters' Laboratories, Inc. Meets the following government specifications MIL-D10860, CCC-C-419, CCC-D-498. Conforms with standards for flexible duct connectors outlined in pamphlet 90B published by National Fire Protection Association.</p>	<p>Listed by Underwriters' Laboratories, Inc. Conforms with standards for flexible duct connectors outlined in pamphlet 90A published by National Fire Protection Association. Complies with Federal Specifications MIL-C-20696B, MIL-Y-1140 C. Fabric is U.L. listed (file No. R 4597). U.L. 214 CCC-T-191A</p>	<p>Listed by Underwriters' Laboratories, Inc. Conforms with standards for flexible duct connectors outlined in pamphlets 90A and 90B published by National Fire Protection Association. Complies with Government Specifications and CCC-T-191B. Conforms To: UL181 Class 1 L.A. APPROVED</p>	<p>Hypalon is designed to meet and conform with standards for flexible duct connectors outlined in pamphlet 90A and 90B published by the National Fire Protection Association. Hypalon is U.L. listed and has received Class A Fire Resistance Approval (R 10321).</p>
<p>WEIGHT ASTM D 751-73 15 oz/sq yd +/- 0.5</p>	<p>WEIGHT ASTM D 751-73 23 oz/sq yd +/- 1.5</p>	<p>WEIGHT ASTM D 751-73 16 oz/sq yd +/- 0.5</p>	<p>WEIGHT Fed. Std. 191B Method 5041 35 oz/sq yd +/- 1</p>
<p>GRAB TENSILE STRENGTH ASTM D 751-73 Method 5100 260 Lbs. Warp x 195 Lbs. Fill</p>	<p>GRAB TENSILE STRENGTH ASTM D 751-73 Method 5100 475 Lbs. Warp x 375 Lbs. Fill</p>	<p>GRAB TENSILE STRENGTH ASTM D 751-73 Method 5100 90 Lbs. Warp x 90 Lbs. Fill</p>	<p>GRAB TENSILE STRENGTH ASTM D 751-73 200 Lbs. Warp x 200 Lbs. Fill</p>
<p>FIRE RESISTANCE Fed. Std. 191A Method 5905 Will not burn nor support combustion. Test CCC-T-191 will conform to U.L. Approval File A Max. 2 sec. after flame</p>	<p>FIRE RESISTANCE Fed. Std. 191A Does not burn - Test Method 5902 of Spec. Fed. Std. 191A (Vertical) has no glow time and only 1/4" char length.</p>	<p>FIRE RESISTANCE Fed. Std. 191A Method 5903 Glass fabric non-combustible coating flame retardant test CCC-T-191B U.L. 214, R 4597 After flame 2 sec. max.Char length 3.5"</p>	<p>FIRE RESISTANCE Passed U.L. 214 Listed Class A Fire Resistance Approval (R 10321)</p>
<p>TEMPERATURE RANGE ASTM D 2136-66 ASTM D 573 Will withstand 210°F for short periods, 185°F Continuous</p>	<p>TEMPERATURE RANGE ASTM D 2136-66 ASTM D 573 -40°F to 240°F Continuous 250°F Intermittent</p>	<p>TEMPERATURE RANGE ASTM D 2136-66 ASTM D 573 -40°F to 180°F 200°F Intermittent</p>	<p>TEMPERATURE RANGE ASTM D 2136-66 ASTM D 573 -45°F to 200°F 240°F Intermittent</p>
<p>TONGUE TEAR STRENGTH ASTM D 751-73 CCC-T-191B Method 5134 8 Lbs. x 8 Lbs.</p>	<p>TONGUE TEAR STRENGTH ASTM D 751-73 20 Lbs. x 15 Lbs.</p>	<p>TONGUE TEAR STRENGTH ASTM D 751-73 CCC-T-191B Method 5134 8 Lbs. x 9 Lbs.</p>	<p>TONGUE TEAR STRENGTH ASTM D 751-8 Fed. Std. 191B Method 5134 80 Lbs. Tongue Tear</p>
<p>WATERPROOF QUALITIES Mullen Burst Test ASTM D 751-73 Method 5512 CCC-C-419 Water resistant</p>	<p>WATERPROOF QUALITIES Mullen Burst Test ASTM D 751-73 Method 5512 Hydrostatic Resistance 750 Lbs. per square inch</p>	<p>WATERPROOF QUALITIES Mullen Burst Test ASTM D 751-73 Method 5512 Hydrostatic Resistance 160 Lbs. per square inch</p>	<p>WATERPROOF QUALITIES Mullen Burst Test ASTM D 751-73 Method 5512 Hydrostatic Resistance 375 Lbs. per square inch</p>
<p>THICKNESS ASTM D 751-73 .028"</p>	<p>THICKNESS ASTM D 751-73 .020"</p>	<p>THICKNESS ASTM D 751-73 .016"</p>	<p>THICKNESS ASTM D 751-73 .036"</p>
<p>CHEMICAL/MILDEW RESISTANCE ASTM D 1149 Treated for fire, water, weather and mildew resistance, Class 1. Will pass 14 day soil burial test CCC-T-191A</p>	<p>CHEMICAL/MILDEW RESISTANCE ASTM D 1149 Resistant to ozone, acids, alkalis, gasoline and grease.</p>	<p>CHEMICAL/MILDEW RESISTANCE ASTM D 1149 Resistant to acids, alkalis, chemical fumes, grease, oil and gasoline.</p>	<p>CHEMICAL/MILDEW RESISTANCE ASTM D 1149 Outstanding resistance to weathering, ultraviolet radiation, ozone and is not affected by mildew.</p>
<p>CANFLEX can be used in all air conditioning, ventilating and heating systems where temperatures do not exceed 185°F. Not recommended for high pressure systems or outdoor connections. Not absolutely airtight or waterproof. Often used when Generic Term "CANVAS DUCT CONNECTOR" is specified.</p>	<p>FLEXLON can be used in practically every type of installation. White coating reflects heat and is clean appearing. Having excellent weathering characteristics, waterproof and ozone resistant makes Flexlon ideal for outdoor applications. Because it is resistant to acids, alkalis, gasoline and grease it can be used in kitchen exhaust and fume hoods. Being absolutely airtight, it is ideal for high pressure systems. Having exceptional strength and yet highly flexible it can be used equally well in domestic, commercial and industrial applications.</p>	<p>GLASSTITE, because it is flame retardant, can be used in domestic and medium size commercial heating, ventilating and air conditioning systems. Because it is airtight and watertight it can be used in fume hoods and on outdoor connections.</p>	<p>HYPALON plain or insulated can be used in practically every type of installation. It is especially recommended for heavy weathering applications. It is not affected by ultraviolet radiation, ozone or mildew. Insulated hypalon has a R rating of 2 and will reduce heat loss/gain. Insulated hypalon is an energy efficient product.</p>

Inland Metal

Sheet Metal Manufactures & Custom Fabricators
Wholesale Heating Supplies

Prices subject to change
without notice

FABRIC SELECTION CHART

MULTIFLEX (PVC/POLYESTER) GENERAL PURPOSE LOW/MED VELOCITY	NEOFLEX (NEOPRENE/FIBERGLASS) INDUSTRY STANDARD HIGH VELOCITY	THERMOLON (SILICONE/FIBERGLASS) SUPERIOR WEATHERING HIGH TEMPERATURES	VINYLON (PVC/NYLON/POLYESTER) GENERAL PURPOSE LOW/MED VELOCITY
MULTIFLEX is a new polyester fabric with a vinyl coating on both sides. An extremely tough connector material. Black in color, the coating is flame retardant. Multiflex is airtight, weather resistant and chemical resistant.	NEOFLEX is a heavy glass fabric, coated on both sides with neoprene. The glass fabric is non-combustible, and the coating is fire retardant, and has no glow time or char length. NEOFLEX is waterproof, airtight, and gasoline and grease resistant.	THERMOLON is a very heavy glass fabric, coated on both sides with silicone. Silver in color, flame proof, it has excellent resistance to many chemicals and weathering. Designed for high temperature applications.	VINYLON is a nylon polyester fabric with a heavy vinyl coating on both sides and extremely tough connector material. Dark gray in color the coating is flame retardant. Vinylon is airtight, weather resistant, and chemical resistant.
Designed to meet NFPA Standard 90A and 90B for flexible duct connectors. Complies with Government Specifications MIL-20696B. Fed. Std. 191B.	Listed by Underwriters' Laboratories, Inc. Conforms with standards for flexible duct connectors outlined in pamphlet #90A National Fire Protection Association. Complies with Federal Specifications MIL-Y-1140 C. U.L. Listed (File 327 G) Conforms To: UL 181 Class 1 L.A. APPROVED	Meets requirements of Underwriters' Laboratory Test procedure U.L. 214. Lab tested for temperatures up to 500° (continuous, 600°F intermittent. Will not support flame. Fabric meets requirements of MIL-Y-1140 H and FTMS 191 A test method 5903. MIL-C-20696 C. Conforms To: UL 181 Class 0 L.A. APPROVED	Listed by Underwriter's Laboratories, Inc. Test procedure U.L. 214. Designed to meet NFPA Standard 90A and 90B. Complies with Government Specifications MIL-C-20696B. U.L. 214 (R 4597) California Fire Marshall F-102.4
WEIGHT Fed. Std. 191B Method 5041. 12 oz/sq yd +/- 1	WEIGHT ASTM D 751-73 Method 5041 29 oz/sq yd +/- 1.5	WEIGHT ASTM D 751-73 Method 5041 15 oz/sq yd +/- 0.5	WEIGHT Fed. Std. 191B Method 5041 20 oz/sq yd +/- 1.5
GRAB TENSILE STRENGTH ASTM D 751-73 Method 5100 100 Lbs. Warp x 100 Lbs. Fill	GRAB TENSILE STRENGTH ASTM D 571-73 475 Lbs. Warp x 375 Lbs. Fill	GRAB TENSILE STRENGTH ASTM D 751-73 550 Lbs. Warp x 400 Lbs. Fill	GRAB TENSILE STRENGTH ASTM D 751-73 225 Lbs Warp x 250 Lbs Fill
FIRE RESISTANCE Test CCC-1-191B Method 5903 Time after flame 2 sec. Char length 5 inches	FIRE RESISTANCE Passed U.L. 214 Flame Resistance After flame 2 sec. max. 3 1/2" char length	FIRE RESISTANCE Fed. Std. 191 A Method 5903 Flame Resistance FTMS 191 A Method 5903 U.S. Bureau of Mines Safety Standards 75-302-3 0" flame spread Self-extinguishing	FIRE RESISTANCE Passed U.L. 214 Flame Resistance R 4462
TEMPERATURE RANGE ASTM D 2136-66 ASTM D 573 -40°F to 180°F 200°F Intermittent	TEMPERATURE RANGE ASTM D 2136-66 ASTM D 573 -40°F to 200°F	TEMPERATURE RANGE ASTM D 2136-66 ASTM D 573 500°F Continuous 600°F Intermittent	TEMPERATURE RANGE ASTM D 2136 ASTM D 573 -40°F to 180°F 200°F Intermittent
TONGUE TEAR STRENGTH ASTM D 751-73 Fed. Std. 191B Method 5134 12 Lbs. x 8 Lbs.	TONGUE TEAR STRENGTH ASTM D 751-73 25 Lbs. Warp x 20 Lbs. Fill (Min.)	TONGUE TEAR STRENGTH ASTM D 751-73 35 Lbs. x 30 Lbs.	TONGUE TEAR STRENGTH ASTM D 751-8 Fed. Std. 191B Method 5134 60 Lbs. x 60 Lbs.
WATERPROOF QUALITIES Mullen Burst Test ASTM D 751-A Method 5512 Hydrostatic Resistance 125 Lbs. per square inch	WATERPROOF QUALITIES Mullen Burst Test ASTM D 751-73 Method 5512 Hydrostatic Resistance 750 Lbs. per square inch	WATERPROOF QUALITIES Mullen Burst Test ASTM D 751-73 Method 5512 Hydrostatic Resistance 600 Lbs. per square inch	WATERPROOF QUALITIES Mullen Burst Test ASTM D 751-73 Method 5512 Hydrostatic Resistance 320 Lbs. per square inch
THICKNESS ASTM D 751-73 .015"	THICKNESS ASTM D 751-73 .025"	THICKNESS ASTM D 751-73 .016"	THICKNESS ASTM D 751-73 .023"
CHEMICAL/MILDEW RESISTANCE ASTM D 1149 Resistant to weathering, oil, gasoline and many other chemicals.	CHEMICAL/MILDEW RESISTANCE ASTM D 1149 Resistant to acids, alkalis, gasoline and grease, not affected by mildew. NOTE: Economy and residential grades are 23 oz/sq yd.	CHEMICAL/MILDEW RESISTANCE ASTM D 1149 Excellent resistance to weathering, acids and alkalis. Adversely affected by gasoline, toluene, acetone and grease. Mil-C-20696C Section 4,6,3 and 4,4,4	CHEMICAL/MILDEW RESISTANCE ASTM D 1149 Resistant to oil, grease, weathering and many other chemicals. NOTE: Surpasses safety standard specifications MIL-C-20696B
MULTIFLEX can be used in practically every type of installation within its temperature range. Recommended for low to medium velocity applications where U.L. listing is not required.	NEOFLEX can be used in practically every type of installation, and most engineers specify it regardless of the type of system. Because it is resistant to acids, alkalis, gasoline and grease, it can be used in kitchen exhaust and fume hoods. Being absolutely waterproof and airtight, it is ideal for high pressure systems and in outdoor connections. Having exceptional strength and yet highly flexible it can be used equally well in domestic, commercial and industrial applications.	THERMOLON can be used in practically every type of installation, especially where high temperatures are used and an airtight connector is required. Thermolon is the logical substitute for asbestos products or where high temperatures are of concern.	VINYLON can be used in practically every type of installation within its temperature limitations. Low in cost - easy to fabricate and extremely high abrasion and cut resistant fabric.

Inland Metal

Sheet Metal Manufacturers & Custom Fabricators
Wholesale Heating Supplies

Prices subject to change
without notice

FLEXIBLE DUCT CONNECTOR

Commercial Grade 3" - 6" - 2" 24 GA

<u>Code</u>	<u>Description</u>	<u>List Price</u>
CNF100-6	Flexlon 100 FT Roll	439.94
CNG100-6	Glasstite 100 FT Roll	302.66
CNN100-6	Neoflex 100 FT Roll	383.48
CNT100-6	Thermolon 100 FT Roll	616.42
CNV100-6	Vynylon 100 FT Roll	281.54



Commercial Grade 4" - 4" - 4" 24 GA

<u>Code</u>	<u>Description</u>	<u>List Price</u>
CNN444	Neoflex 100 FT Roll	357.80
CNV444	Vynylon 100 FT Roll	285.14



Commercial Grade 3" - 3" - 3" 24 GA

<u>Code</u>	<u>Description</u>	<u>List Price</u>
CNC100	Canflex 100 FT Roll	259.25
CNF100	Flexlon 100 FT Roll	357.60
CNG100	Glasstite 100 FT Roll	247.63
CNN100	Neoflex 100 FT Roll	293.62
CNT100	Thermolon 100 FT Roll	445.71
CNV100	Vynylon 100 FT Roll	257.23



Economy Grade 2.75" - 3" - 2.75" 28 GA

<u>Code</u>	<u>Description</u>	<u>List Price</u>
CNEC100	Canflex 100 FT Roll	211.77
CNEF100	Flexlon 100 FT Roll	299.72
CNEG100	Glasstite 100 FT Roll	221.26
CNEM100	Multiflex 100 FT Roll	188.46
CNEN100	Neoflex 100 FT Roll	254.78
CNET100	Thermolon 100 FT Roll	425.95
CNEV100	Vynylon 100 FT Roll	208.42



Residential Grade 1.75" - 3" - 1.75" 28 GA

<u>Code</u>	<u>Description</u>	<u>List Price</u>
CNRC100	Canflex 100 FT Roll	174.08
CNRF100	Flexlon 100 FT Roll	239.55
CNRG100	Glasstite 100 FT Roll	174.98
CNRM100	Multiflex 100 FT Roll	155.46
CNRR100	Neoflex 100 FT Roll	194.88
CNRT100	Thermolon 100 FT Roll	339.11
CNRV100	Vynylon 100 FT Roll	166.65



**Note: Available in stainless and aluminum in certain sizes.
Please call our office for further information.**

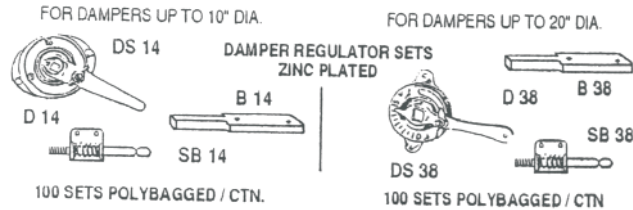
Inland Metal

Sheet Metal Manufacturers & Custom Fabricators
Wholesale Heating Supplies

Prices subject to change
without notice

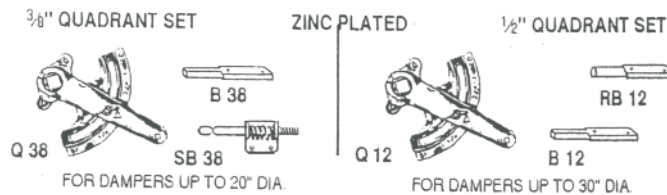
CAIN

Damper Regulator Sets



<u>Code</u>	<u>Description</u>	<u>Packaging</u>	<u>List Price</u>
DS14S	1/4" Regular	Per Bag	2.57 / EA
DS14LS	1/4" Long	Per Bag	2.80 / EA
DS38S	3/8" Regular	Per Bag	4.85 / EA
DS38LS	3/8" Long	Per Bag	6.12 / EA

Damper Quadrant



<u>Code</u>	<u>Description</u>	<u>Packaging</u>	<u>List Price</u>
QS38	3/8" Regular	Single	6.77 / EA
QS38L	3/8" Long	Single	7.54 / EA
QS12S	1/2" Regular	Single	7.75 / EA
QS12LS	1/2" Long	Single	8.65 / EA

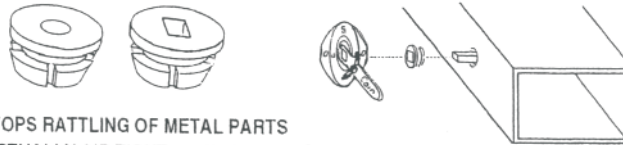
Inland Metal

Sheet Metal Manufactures & Custom Fabricators
Wholesale Heating Supplies

Prices subject to change
without notice

CAIN Damper Hardware

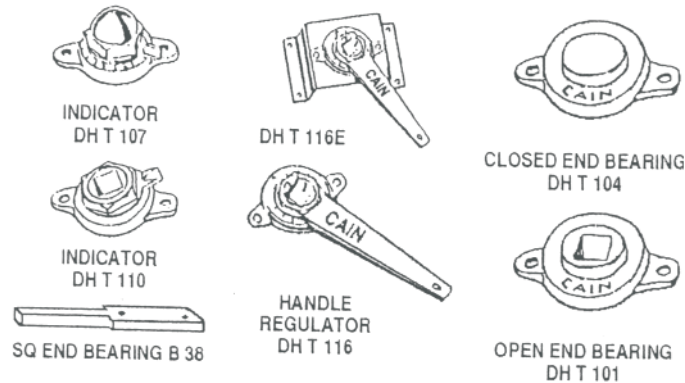
<u>Code</u>	<u>Description</u>	<u>Price List</u>
NB14R	RD 1/4" Nylon bearing inserts (100)	49.25 / 100
NB14S	SQ 1/4" Nylon bearing inserts (100)	49.25 / 100
NB38R	RD 3/8" Nylon bearing inserts (100)	49.25 / 100
NB38S	SQ 3/8" Nylon bearing inserts (100)	49.25 / 100



- STOPS RATTLING OF METAL PARTS
- VIRTUALLY AIR TIGHT - SNAPS INTO 5/8" DIA. HOLE
- EASY TO ROTATE - INSERT ACTS AS A BEARING
- EASY TO INSTALL - THUMB PRESSURE SNAPS & LOCKS IN PLACE
- AVAILABLE FOR 1/4" & 3/8" CAIN SQUARE & ROUND BEARINGS

Tekline Regulators

ENGINEERED REGULATORS AND BEARINGS
ALL TEKLINE HARDWARE MAY BE COMBINED FOR QUANTITY DISCOUNTS



<u>Code</u>	<u>Description</u>	<u>Price List</u>
T101	3/8" open end bearing	P.O.A.
T104	3/8" closed end bearing	P.O.A.
T107	3/8" indicator acorn	P.O.A.
T110	3/8" indicator hex	P.O.A.
T113	3/8" handle acorn	P.O.A.
T116	3/8" handle hex	P.O.A.
T116E1.0	1" 3/8" reg. set hex	P.O.A.
T116E1.5	1 1/2" 3/8" reg. set hex	P.O.A.
T116E2.0	2" 3/8" reg. set hex	P.O.A.

P.O.A. - PRICE ON APPLICATION

Inland Metal

Sheet Metal Manufactures & Custom Fabricators
Wholesale Heating Supplies

Prices subject to change
without noitce

CAIN

Damper Hardware

Elevated Regulators c/w Seals

<u>Code</u>	<u>Description</u>	<u>List Price</u>
ER1410	1/4" Reg. - 1" Elevation	2.69 / EA
ER1415	1/4" Reg. - 1 1/2" Elevation	2.80 / EA
ER1420	1/4" Reg. - 2" Elevation	2.97 / EA
ER3810	3/8" Reg. - 1" Elevation	2.69 / EA
ER3815	3/8" Reg. - 1 1/2" Elevation	2.80 / EA
ER3820	3/8" Reg. - 2" Elevation	2.97 / EA



Note: Fits 1/4" & 3/8" Long Square End Bearings. Fits Round Pipe and Flat Duct.

Crank Arm / Swivel

<u>Code</u>	<u>Description</u>	<u>List Price</u>
CA12S	Crank 1/2" Short	7.71 / EA
CA38S	Crank 3/8" Short	8.94 / EA
CA12L	Crank 1/2" Long	10.43 / EA
CA38L	Crank 3/8" Long	9.58 / EA
CS716	Swivel 1/4 - 20 x 7/16	3.94 / EA
CS916	Swivel 1/4 - 20 x 9/16	3.94 / EA



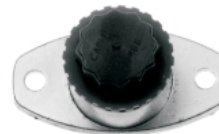
Access Door Handle / Latch

<u>Code</u>	<u>Description</u>	<u>List Price</u>
CL1	Drawtite Sash Lock	4.48 / EA
CP10	3/8" Diameter Latch Assembly	9.78 / EA
CP20	1/2" Diameter Latch Assembly	18.72 / EA



Test Ports

<u>Code</u>	<u>Description</u>	<u>List Price</u>
ITP1	1" Port	6.62 / EA
ITP1	1" Port - Box of 25 Pcs	5.92 / EA



Staple Gun

<u>Code</u>	<u>Description</u>	<u>Packaged</u>	<u>List Price</u>
ST-31	Stapler	1	89.55 / EA
694/9	3/8" Staples	1 Box 5000	20.31 / BX
694/12	1/2" Staples	1 Box 5000	23.02 / BX

Inland Metal

Sheet Metal Manufacturers & Custom Fabricators
Wholesale Heating Supplies

Prices subject to change
without notice

CAIN

Insulation Pins / Clips

Weld Pins / Clips

<u>Code</u>	<u>Description</u>		<u>Packaged</u>	<u>List Price</u>
WP34	3/4" Weld Pin		1000	19.60 / m
WP114	1 1/4" Weld Pin		1000	24.94 / m
WP200	2" Weld Pin		1000	34.38 / m
WP250	2 1/2" Weld Pin		1000	45.45 / m


OC1	Easy on Clip		1000	43.28 / m
-----	--------------	---	------	-----------

Pin Welder

<u>Code</u>	<u>Description</u>		<u>List Price</u>
WP650	Portable Pin Welder c/w case		583.43 / EA
WP650R	Replacement Nailtip		52.94 / EA

WITH HANDSOME PLASTIC CARRYING CASE

Cup Pins 9 GA

<u>Code</u>	<u>Description</u>		<u>Packaged</u>	<u>List Price</u>
CWF50	1/2" for 1/2" Liner 2 lb		1000	72.83 / m
CWF50B	1/2" for 1/2" Liner 2 lb Bulk		5000	63.22 / m
CWF100	3/4" for 1" Liner 1 1/2 lb		1000	77.52 / m
CWF100B	3/4" for 1" Liner 1 1/2 lb Bulk		5000	70.49 / m
CWF150	1" for 1" Liner 3 lb		1000	81.88 / m
CWF150B	1" for 1" Liner 3 lb Bulk		5000	74.72 / m
CWF200	1 1/2" for 2" Liner 4-6 lb		1000	131.49 / m
CWF200B	1 1/2" for 2" Liner 4-6 lb Bulk		3000	115.08 / m
CWF250	2" for 2" Liner 1 1/2-2 lb		1000	136.22 / m
CWF250B	2" for 2" Liner 1 1/2-2 lb Bulk		3000	121.68 / m

S2000	Pin Welder 2000 Series 208/230 Volts 1 PH		5549.29 / EA
-------	---	--	--------------



Inland Metal

Sheet Metal Manufacturers & Custom Fabricators
Wholesale Heating Supplies

Prices subject to change
without notice

CAIN

MISCELLANEOUS ITEMS

STIK PINS

<u>Code</u>	<u>Description</u>	<u>Package</u>	<u>List Price</u>
SP1250	1 1/4" Self Adhesive Pin/Clip	100	24.81 /c
SP1750	1 3/4" Self Adhesive Pin/Clip	100	25.36 /c
SP2000	2" Self Adhesive Pin/Clip	100	25.86 /c
SP2500	2 1/2" Self Adhesive Pin/Clip	100	26.31 /c



PIANO HINGE

<u>Code</u>	<u>Description</u>	<u>List Price</u>
HPZ116	1 1/16" x 3 FT Zinc Plated	7.54 /EA
HPZ112	1 1/2" x 3 FT Zinc Plated	8.62 /EA
HPZ23	2" x 3 FT Zinc Plated	15.18 /EA
HH2	2" x 1 9/16 Butt Hinge Zinc	1.29 /EA
HH3	3" x 2" Butt Hinge Zinc	1.51 /EA



GASKET

<u>Code</u>	<u>Description</u>	<u>Package</u>	<u>List Price</u>
BN22	1/8 x 1/2 Neoprene Gasket	50 FT Roll	0.28 /FT
BN34	3/8 x 3/4 Neoprene Gasket	50 FT Roll	0.54 /FT
BN334	3/16 x 3/4 Neoprene Gasket	50 FT Roll	0.35 /FT



MISC. HARDWARE

<u>Code</u>	<u>Description</u>	<u>List Price</u>
CKP5	1/2 x 2 1/2 Pins	1.06 /EA
CKP12	1/2 x 6 Pins	2.15 /EA
CKP7	1/2 x 6 Sq to Rd Pin	5.20 /EA
CKP10	1/2 Bronze Bearings	0.63 /EA
CKP13	Bearing Straps/Set Screw	0.97 /EA



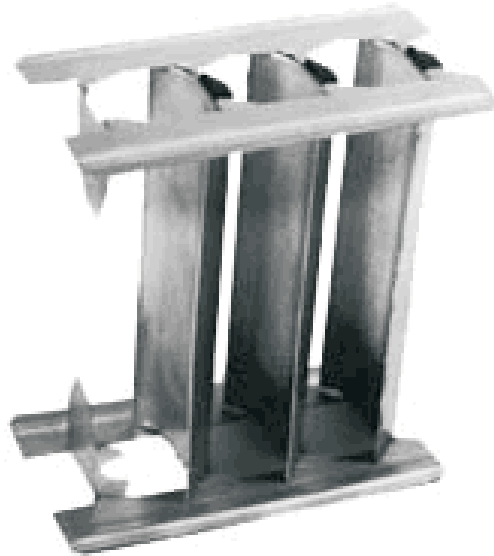
Inland Metal

Sheet Metal Manufacturers & Custom Fabricators
Wholesale Heating Supplies

Prices subject to change
without notice

TURNING VANES AND RAILS

Meets SMACNA Standard



2" Vane 26 GA
 4" Vane 24 GA
 Push Rail 24 GA

<u>Code</u>	<u>Description</u>	<u>Packaged</u>	<u>Wht</u>	<u>List Price</u>
TV224	2" Galv. Vane Hollow	350 FT 10 FT Len.	175 #	1.51 /FT
TV424	4" Galv. Vane Hollow	150 FT 10 FT Len.	180 #	2.94 /FT
ACTV424	4" Accoustic Vane Hollow	100 FT 10 FT Len.	110 #	8.46 /FT
EZRAIL2	Galv. Push on Rail 2"	250 FT 10 FT Len.	96 #	1.18 /FT
EZRAIL4	Galv. Push on Rail 4"	150 FT 10 FT Len.	91 #	1.71 /FT
VLT2	Vane Locking Tool	1	1 #	109.42 /FT
RAV4G	Galv. 4 1/2" Rad. Single	100 FT 10 FT Len.	30 #	2.69 /FT
VR4G	Galv. 4 1/2" Rail	100 FT Roll	38 #	139.49 /FT

Inland Metal

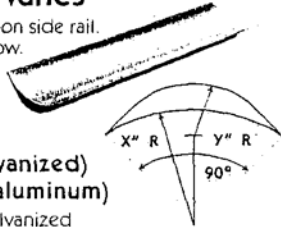
Sheet Metal Manufactures & Custom Fabricators
 Wholesale Heating Supplies

Prices subject to change
 without notice

CAIN TURNING VANES AND SIDE RAILS

Hollow Turning Vanes

- For use with Cain's push-on side rail.
- Minimizes friction in elbow.
- Quiet operation.
- Easy installation (see push-on side rail).



2" radius vanes:

RA HTV 200G (galvanized)
or RA HTV 200A (aluminum)

- Supplied in 26-gauge galvanized steel or .032" 3003 H14 M.F. aluminum.
- 10-ft. sections, packaged 350 ft. per carton.

$$\begin{aligned} 2" \text{ X} &= 2" \quad \text{R} \quad \text{Y} = 1" \text{ R} \\ 4" \text{ X} &= 4\frac{1}{2}" \text{ R} \quad \text{Y} = 2" \text{ R} \end{aligned}$$

4½" radius vanes: RA HTV 400G (galvanized)

- Supplied in 24-gauge galvanized steel.
- 10-ft. sections, packaged 150 ft. per carton.

Push-On Side Rail

- For 2" or 4½" radius hollow turning vanes.
- No special tool required.
- Cut vanes and rails to length and push vane onto rail.
- No special fastener required—use sheet metal screws at end vanes and on each sixth vane.
- Supplied in 24-gauge galvanized steel or aluminum.



For 2" Radius: RA HTV 2 GRA (galvanized) or HTV 2 ARA (aluminum)

- 10-ft. sections, packaged 250 ft. per carton for 2" radius.

For 4½" Radius: RA HTV 4 GRA (galvanized)

- 10 ft. sections, packaged 150 ft. per carton for 4½" radius.

Pre-Formed Single Blade Vane

- Hemmed edges for added strength; smooth edges; fast assembly.
- No spacing guesswork to position vane when used with Cain instant vane rail.
- No riveting or special fasteners needed.
- No scrap—merely cut to length and position in pre-formed instant vane rail.
- No special equipment needed—just tap vane and instant vane rail together with a ball peen hammer.



2" radius vanes: RA V2G (galvanized) or RA V2A (aluminum)

- Supplied in 24-gauge galvanized steel or .032" 3003 H14 M.F. aluminum.
- 10-ft. sections, packaged 300 ft. per carton.

4½" radius vanes: RA V4G (galvanized).

- Supplied in 22-gauge galvanized steel.
- 10-ft. sections, packaged 150 ft. per carton.

Instant Vane Rail

- Rails for 2" and 4½" radius single blade vanes.
- No special tools or fasteners required.
- Use ball peen hammer to fasten vane to rail.
- Supplied in 24-gauge galvanized steel or .032" 3003 H14 M.F. aluminum.
- Packaged 100 ft. roll per carton.
- For 2" radius vane use instant vane rail, RA IVR 3G or scoop rail, RA SR.
- For 4½" radius vane use instant vane rail RA IVR 4G (galvanized), RA IVR (original, galvanized), or RA IVR 4A (aluminum).



Acoustic Turning Vane

- This 4½" radius hollow turning vane has 1½ lb density acoustical fiberglass sandwiched between the perforated front surface and the smooth back surface.
- Designed to reduce duct noise.
- Use with push-on side rail for 4½" radius vane.
- Supplied in 24-gauge galvanized steel.
- 10-ft. lengths, packaged 150 ft. per carton, RA ATV 400G.



Duct Board Vanes

- Heavy density pressure molded fiberglass, RA SV14.
- Vane is designed to meet UL 181-16 Fiberglass erosion guideline.
- Silent vane will not break away, flake off, or show evidence of delamination or erosion at air velocities up to 2500 feet per minute.
- No metal-to-metal vibrations.
- No sympathetic vibration noise.
- For installation use Cain duct board vane cutout tool (RA SVC).
- Cut vane to length with ordinary cutting knife and insert into position created using cutout tool.
- 6-ft. lengths, packaged 126 ft. per carton.



See CAIN Product Catalog
 for complete details.

Cain

MANUFACTURING COMPANY, INC.

QUALITY HVAC PRODUCTS SINCE 1935
 P.O. Box 1000 • Pelham, AL 35124
 205-663-2200 • 1-800-554-0342 • FAX 205-663-2298

Inland Metal

Sheet Metal Manufacturers & Custom Fabricators
 Wholesale Heating Supplies

Prices subject to change
 without notice

Cross Reference Chart

Damper Regulators

<u>Description</u>	<u>Cain</u>	<u>Duro Dyne</u>
1/4" dial regulator set	DS14	KS145
1/4" dial regulator set (long)	DS14L	KS145L
3/8" dial regulator set	DS38	KSR195
3/8" dial regulator set (long)	DS38L	KSR195L
3/8" quadrant regulator set	QS38	KS385
3/8" quadrant regulator set (long)	QS38L	KS385L
1/2" quadrant regulator set	QS12	KS12
1/4" dial regulator	D14	K-2
3/8" dial regulator	D38	KR-3
3/8" quadrant regulator	Q38	K-4
1/2" quadrant regulator	Q12	K-5
1/4" square end bearing	B14	KP8S
1/4" square end bearing (long)	B14L	KP8L
1/4" square end bearing x-long steel	B14XLS	KP8XL
1/4" spring lock bearing	SB14	KP-6
1/4" spring bearing (long)	SB14L	KP-6L
3/8" square end bearing	B38	KP-9S
3/8" square end bearing (long)	B38L	KP9L
3/8" square end bearing x-long steel	B38XLS	KP9XL
3/8" spring lock bearing	SB38	KP-7
3/8" spring bearing (long)	SB38L	KP-7L
3/8" round end bearing	RB38S	KP-9R
3/8" round end bearing (long)	RB38LS	N/A
1/2" round end bearing	RB12	KP10R
1/2" square end bearing	B12	KP10S
1/2" square end bearing (long)	B12L	KP10L
1/2" round clamp quadrant	RH12	K-8
1/2" square clamp quadrant	SH12	K-9
Elevated damper regulators	ER1410	ESO-14-100

Damper Regulators Hammer on Damper Sets

<u>Description</u>	<u>Cain</u>	<u>Duro Dyne</u>
Bearing, washer, handle, wing nut	K69	RS156
2ea. Bearing, washer, handle, wing nut	K70	RS256
Bearing, washer, handle, wing nut, tip	K71	RS356
Handle, wingnut, washer set (Polybagged)	K80	N/A
Threaded bearing tip, washer, handle, w/nut	K90	N/A
Washer	K704	RP-3
Handle	K705	RP-1
Handle (for K 900 threaded tip)	K910	RP1T
Wing Nut	K706	RP-2
Damper tip	K102	RB-25
5/16" bearing	K708	RB-50
Threaded bearing tip	K900	RB-25T

Pointer Through Insulation Weld Pins

<u>Description</u>	<u>Cain</u>	<u>Duro Dyne</u>
1/2" Pins for 1/2" 2 lb liner	CWF 50	CP12
3/4" Pins for 1" 1 1/2 lb liner	CWF100	CP34
7/8" Pins for 1" 3 lb liner	CWF150	CP100
1 1/8" Pins for 1" H.D. 4 to 6 lb liner	CWF175	CP118
1 1/2" Pins for 2" 1 1/2 lb liner	CWF200	CP150
2" Pins for 2" 1 1/2 to 2 lb liner	CWF250	CP200

Pincher Through Insulation Mechanical Pin

<u>Description</u>	<u>Cain</u>	<u>Duro Dyne</u>
.470" Pins for 1/2" 2 lb liner	CMF 50	TBG12
.625" Pins for 1" 1 1/2 lb liner	CMF100	TBG100
.748" Pins for 1" 3 lb liner	CMF120	TBG-10H
.900" Pins for 1" H.D. 4 to 6 lb liner	CMF110	BGT-IVH
1.250" Pins for 2" 1 1/2 lb liner	CMF130	BGT-11B
1.500" Pins for 2" 1 1/2 to 2 lb liner	CMF150	BGT-150

Duct Board - Fiberglass Turning Vanes

<u>Description</u>	<u>Cain</u>	<u>Duro Dyne</u>
Duct Board Vane	SV 14	QV
Duct Board Vane cut out tool	SVC	N/A

Hollow Turning Vanes - Side Rails

<u>Description</u>	<u>Cain</u>	<u>Duro Dyne</u>
2" Hollow Turning Vane	HTV200G	N/A
4" Hollow Turning Vane	HTV400G	N/A
4" Acoustic Vane	ATV400G	N/A
2" Side Rail	HTV2GRA	N/A
4" Side Rail	HTV4GRA	N/A

Instant Vane Rail - Scooprail-Louerrail

<u>Description</u>	<u>Cain</u>	<u>Duro Dyne</u>
Instant Vane Rail	IVR4G	VR-2
Scoop Rail (Galv)	SR	JVR-2
Louerrail (Galv)	LR	N/A

Flexible Duct Connector

Commercial Grade Connector

<u>Description</u>	<u>Cain</u>	<u>Duro Dyne</u>
Canflex (Treated Canvas)	C 100	N/A
Flexlon	F 100	MFD
Glasstite	G 100	MGL
Neoflex 30 oz	N 100	MFN
Neoflex 23 oz	N 100L	MFN (Light)
Neoflex 3 x 6 x 3	N 100-6	SMFN
Thermolon	T 100	MFT
Vinylon	V 100	N/A

Economy Grade Connector

<u>Description</u>	<u>Cain</u>	<u>Duro Dyne</u>
Canflex (Treated Canvas)	EC 100	EFX
Flexlon	EF 100	EFD
Glasstite	EG 100	N/A
Multiflex	EM 100	N/A
Neoflex	EN 100	EFN
Thermolon	ET 100	EFT
Vinylon	EV 100	N/A

Residential Grade Connector

<u>Description</u>	<u>Cain</u>	<u>Duro Dyne</u>
Canflex (Treated Canvas)	RC 100	JRX
Flexlon	RF 100	JRDU
Glasstite	RG 100	JGL
Multiflex	RM 100	N/A
Neoflex	RN 100	JRN
Vinylon	RV 100	N/A

Commercial Grade Connector

<u>Description</u>	<u>Cain</u>	<u>Duro Dyne</u>
Neoflex (4 x 4 x 4)	N 444	MFN4X4X4
Vinylon (4 x 4 x 4)	V 444	MBX4X4X4
Hypalon (4 x 5 x 4)	H 501	N/A

Inland Metal

Sheet Metal Manufactures & Custom Fabricators
Wholesale Heating Supplies

Prices subject to change
without notice

ACCESS DOORS

METU-STREIMER ON FLAT

<u>CODE</u>	<u>DESCRIPTION</u>	<u>LIST PRICE</u>
AD73GA	7 x 3 on Flat	34.55
AD84GA	8 x 4 on Flat	37.22
AD126GA	12 x 6 on Flat	49.20
AD128GA	12 x 8 on Flat	57.35
AD168GA	16 x 8 on Flat	69.02
AD1612GA	16 x 12 on Flat	86.65
AD2012GA	20 x 12 on Flat	110.26
AD2016GA	20 x 16 on Flat	148.00
AD2416GA	24 x 16 on Flat	185.67
AD2420GA	24 x 20 on Flat	238.97
AD2820GA	28 x 20 on Flat	273.33
ADRC	Access Door Retaining Cable	9.23



NOTE: ALL SIZES SHOWN ALSO AVAILABLE IN STAINLESS 304, 316 & ALUMINUM

OVAL ACCESS DOORS

<u>CODE</u>	<u>DESCRIPTION</u>	<u>LIST PRICE</u>
AD85	8 x 5 on Flat	20.38
AD126	12 x 6 on Flat	26.15
AD1810	18 x 10 on Flat	40.38
AD2214	22 x 14 on Flat	70.21
AD2517	25 x 17 on Flat	86.92
AD126UI	12 x 6 on Flat Un-Insulated	24.54



Inland Metal

Sheet Metal Manufacturers & Custom Fabricators
Wholesale Heating Supplies

Prices subject to change
without notice

ACCESS DOORS

METU-STREIMER ON ROUND

<u>CODE</u>	<u>DESCRIPTION</u>	<u>LIST PRICE</u>
AD733	7 x 3 on 3" Round	38.25
AD734	7 x 3 on 4" Round	38.25
AD735	7 x 3 on 5" Round	38.25
AD846	8 x 4 on 6" Round	38.42
AD847	8 x 4 on 7" Round	38.42
AD848	8 x 4 on 8" Round	38.42
AD8410	8 x 4 on 10" Round	38.42
AD12812	12 x 8 on 12" Round	52.25
AD12814	12 x 8 on 14" Round	52.25
AD12816	12 x 8 on 16" Round	52.25
AD161218	16 x 12 on 18" Round	77.41
AD161220	16 x 12 on 20" Round	77.41
AD201622	20 x 16 on 22" Round	142.04
AD201624	20 x 16 on 24-26" Round	142.04
AD201628	20 x 16 on 28" Round	142.04
AD201630	20 x 16 on 30-32" Round	142.04
AD201634	20 x 16 on 34-36" Round	142.04
AD201638	20 x 16 on 38-40" Round	142.04
AD201642	20 x 16 on 42-44" Round	142.04
AD201648	20 x 16 on 48-50" Round	142.04
AD201652	20 x 16 on 52-58" Round	142.04
AD201660	20 x 16 on 60-70" Round	142.04
ADRC	Access Door Retaining Cable	9.23



**NOTE: ALL SIZES SHOWN ALSO AVAILABLE IN STAINLESS & ALUMINUM
ALSO BLACKIRON - PLEASE CALL FOR INFORMATION**

Inland Metal Mfg.

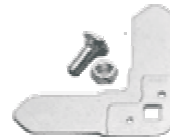
Sheet Metal Manufacturers & Custom Fabricators
Wholesale Heating Supplies

Prices subject to change
without notice

WARD - QUICK FLANGE
DUCT CONNECTOR
PRE-PUNCHED HOLE - EASY INSTALL
GALVANIZED DUCT FLANGE 1 3/8" HIGH

<u>Code</u>	<u>Description</u>	<u>List Price</u>
JFL20	"J" Flange 20 Ft Lengths c/w Holes	1.92 / FT
JFL20S	"J" Flange 20 Ft Lengths 1500 FT / Skid	1.72 / FT
JFL10	"J" Flange 10 Ft Lengths c/w Holes	1.92 / FT
JC	"J" Corners Less than carton c/w Bolt/Nut	1.51 / EA
JCB	"J" Corners 200 Per Box c/w Bolt/Nut	1.36 / EA
CUTCLEAT	6" Cut Cleat	1.03 / EA
CUTCLEATB	6" Cut Cleat 400 per box	0.92 / EA
BUTYL	Butyl Gasket 3/16 x 5/8 Roll	0.29 / FT
BUTYLC	Butyl Gasket 3/16 x 5/8 780 Ft per box	0.26 / FT
GASKET	Neoprene Gasket	0.36 / FT
PATCH12	1" x 2" Butyl Patch	0.27 / EA
CLEAT TOOL	Cleat Tool	55.28 / EA

Available in Stainless & Aluminum



Inland Metal

Sheet Metal Manufacturers & Custom Fabricators
Wholesale Heating Supplies

Prices subject to change
without notice

WARD INDUSTRIES

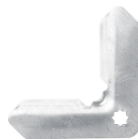
GALVANIZED DUCT CONNECTOR 7/8" H

<u>Code</u>	<u>Description</u>	<u>List Price</u>
HFL	"H" Flange 20 Ft Lengths c/w Holes	1.62 / FT
HFLS	"H" Flange 20 Ft - 1500 per skid c/w Holes	1.45 / FT
HC	"H" Corners Less than carton	1.30 / EA
HCB	"H" Corners 400 per box c/w Bolt/Nut	1.17 / EA
CUTCLEAT	6" Cut Cleat	1.03 / EA
CUTCLEAT	6" Cut Cleat 400 per carton	0.92 / EA
BUTYL	Butyl Gasket 3/16 x 5/8 Roll 30 ft Length	0.29 / FT
BUTYL	Butyl Gasket 3/16 x 5/8 780 ft per box	0.26 / FT
GASKET	Neoprene Gasket 5/16 x 3/4 50 ft roll	0.36 / FT
CLEAT TOOL	Cleat Tool	55.28 / EA



TDF ACCESSORIES

<u>Code</u>	<u>Description</u>	<u>List Price</u>
TDFC	TDF Corners 300 per box	0.67 / EA
TDCC	TDC Corners 300 per box	0.67 / EA
TDFCLEAT	TDF Cut Cleat 400 per box	1.03 / EA
TDCCLEAT	TDC Cut Cleat 400 per box	1.03 / EA
BUTYL	Butyl 3/16 x 5/8 Roll	0.29 / FT
BUTYLC	Butyl 3/16 x 5/8 780 ft per box	0.26 / FT
TDFCT	TDF Cleat Tool	55.28 / EA
TDFNB	TDF 3/8" Nut/Bolt	0.49 / EA



TDF CORNER



TDC CORNER

Inland Metal Mfg.

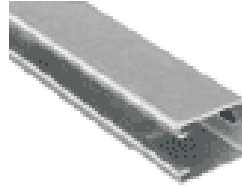
Sheet Metal Manufacturers & Custom Fabricators
Wholesale Heating Supplies

Prices subject to change without notice

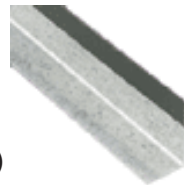
WARD INDUSTRIES

TRAPEZE HANGERS - GALV.

<u>Code</u>	<u>Description</u>	<u>List Price</u>
TZH16120	16 GA - 10 ft Length - Galv.	3.90 / FT
TZH16240	16 GA - 20 ft Length - Galv.	3.90 / FT
TZH18120	18 GA - 10 ft Length - Galv.	3.26 / FT
TZH18240	18 GA - 20 ft Length - Galv.	3.26 / FT
TZWGA	16 GA - Galvanized Washer	0.45 / EA



<u>Code</u>	<u>Description</u>	<u>List Price</u>
BLN10GA120	1" x 10 ft Galv. Bull Nosing	2.05 / FT
BLN20GA120	2" x 10 ft Galv. Bull Nosing (Self Adhesive - 26GA Galvanized)	2.05 / FT



<u>Code</u>	<u>Description</u>	<u>List Price</u>
AGP1516	1 1/2 x 1 1/2 - 16 GA Galv. Angle c/w Punched Holes on 4" Centres	1.95 / FT



THREADED ROD ZINC PLATED

<u>Code</u>	<u>Description</u>	<u>List Price</u>
THR14ZN12	1/4" x 12 FT Length	0.50 / FT
THR14ZN6	1/4" x 6 FT Length	0.50 / FT
THR38ZN12	3/8" x 12 FT Length	0.90 / FT
THR38ZN6	3/8" x 6 FT Length	0.90 / FT
THR12ZN6	1/2" x 6 FT Length	1.45 / FT
THR12ZN12	1/2" x 6 FT Length	1.52 / FT
HNTZN38	3/8" Nut Zinc Plated (100 pack)	16.41 / BAG
HW SZN38	3/8" Flat Washer ZN (100 pack)	16.41 / BAG
HNTZN14	1/4" Nut - Zinc Plated (100 pack)	13.60 / BAG
HW SZN14	1/4" Flat Washer Sinc (100 pack)	10.86 / BAG
HNTZN12	1/2" Nut Zinc Plated (100 Pack)	29.49 / BAG
HW SZN12	1/2" Flat Washed (100 Pack)	23.59 / BAG



Inland Metal Mfg.

Sheet Metal Manufactures & Custom Fabricators
Wholesale Heating Supplies

Prices subject to change
without notice

GALVANIZED
PLUG/TEE CAP SPUN

<u>Code</u>	<u>Description</u>	<u>List Price</u>
PTC3	3" Plug/Cap	7.95
PTC4	4" Plug/Cap	8.19
PTC5	5" Plug/Cap	10.22
PTC6	6" Plug/Cap	10.90
PTC7	7" Plug/Cap	12.29
PTC8	8" Plug/Cap	13.64
PTC9	9" Plug/Cap	13.64
PTC10	10" Plug/Cap	17.26
PTC12	12" Plug/Cap	17.74
PTC14	14" Plug/Cap	23.86
PTC16	16" Plug/Cap	36.15
PTC18	18" Plug/Cap	36.55
PTC20	20" Plug/Cap	37.06
PTC22	22" Plug/Cap	40.75
PTC24	24" Plug/Cap	45.96
PTC26	26" Plug/Cap	62.75
PTC28	28" Plug/Cap	64.10
PTC30	30" Plug/Cap	65.93



Inland Metal

Sheet Metal Manufacturers & Custom Fabricators
Wholesale Heating Supplies

Prices subject to change
without notice

MCGILL AIRFLOW
UNI GASKET
SELF SEALING SPIRAL COUPLER

<u>Code</u>	<u>Description</u>	<u>List Price</u>
UGC4	4" c/w Rubber Gasket	15.00
UGC5	5" c/w Rubber Gasket	14.31
UGC6	6" c/w Rubber Gasket	14.77
UGC7	7" c/w Rubber Gasket	15.23
UGC8	8" c/w Rubber Gasket	15.62
UGC9	9" c/w Rubber Gasket	16.31
UGC10	10" c/w Rubber Gasket	16.77
UGC12	12" c/w Rubber Gasket	20.46
UGC14	14" c/w Rubber Gasket	21.54
UGC16	16" c/w Rubber Gasket	24.31
UGC18	18" c/w Rubber Gasket	26.54
UGC20	20" c/w Rubber Gasket	28.00
UGC22	22" c/w Rubber Gasket	30.00
UGC24	24" c/w Rubber Gasket	31.54



**NOTE: TESTING & APPROVED TO 10" W.C.
POSITIVE OR NEGATIVE PRESSURE**

Inland Metal

Sheet Metal Manufactures & Custom Fabricators
Wholesale Heating Supplies

Prices subject to change
without notice

McGILL AIRFLOW
UNI GASKET
SELF SEALING H.V. ELBOWS

<u>CODE</u>	<u>DESCRIPTION</u>	<u>LIST PRICE</u>
UG490	4" - 90° ELBOW C/W GASKET	44.92
UG590	5" - 90° ELBOW C/W GASKET	48.31
UG690	6" - 90° ELBOW C/W GASKET	53.69
UG790	7" - 90° ELBOW C/W GASKET	66.90
UG890	8" - 90° ELBOW C/W GASKET	77.85
UG1090	10" - 90° ELBOW C/W GASKET	107.08
UG1290	12" - 90° ELBOW C/W GASKET	131.38
UG445	4" - 45° ELBOW C/W GASKET	41.31
UG545	5" - 45° ELBOW C/W GASKET	44.00
UG645	6" - 45° ELBOW C/W GASKET	49.23
UG745	7" - 45° ELBOW C/W GASKET	53.54
UG845	8" - 45° ELBOW C/W GASKET	59.23
UG1045	10" - 45° ELBOW C/W GASKET	76.77
UG1245	12" - 45° ELBOW C/W GASKET	93.69



Inland Metal

Sheet Metal Manufacturers & Custom Fabricators
Wholesale Heating Supplies

Prices subject to change
without notice

AIR DUCT DIE STAMPED ELBOWS

<u>Code</u>	<u>Description</u>	<u>List Price</u>
DSE1290	12" 90 Degree 22 GA	95.08
DSE1090	10" 90 Degree 22 GA	74.77
DSE990	9" 90 Degree 22 GA	65.69
DSE890	8" 90 Degree 22 GA	51.85
DSE790	7" 90 Degree 24 GA	43.85
DSE690	6" 90 Degree 24 GA	33.08
DSE590	5" 90 Degree 24 GA	28.85
DSE490	4" 90 Degree 24 GA	26.46
DSE390	3" 90 Degree 24 GA	24.92
DSE1245	12" 45 Degree 22 GA	65.23
DSE1045	10" 45 Degree 22 GA	51.54
DSE945	9" 45 Degree 22 GA	43.38
DSE845	8" 45 Degree 24 GA	37.23
DSE745	7" 45 Degree 24 GA	33.08
DSE645	6" 45 Degree 24 GA	30.00
DSE545	5" 45 Degree 24 GA	26.00
DSE445	4" 45 Degree 24 GA	24.23
DSE345	3" 45 Degree 24 GA	19.23



Inland Metal

Sheet Metal Manufacturers & Custom Fabricators
 Wholesale Heating Supplies

Prices subject to change
 without notice

DUCT COVERS

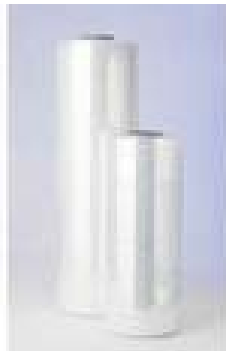
Temporary End Cap for Air Handling Systems
Made of Polypropylene & Elastic
Fits Round or Rectangular

<u>Code</u>	<u>Description</u>	<u>Box</u>	<u>List Price</u>
DP06-10	Duct Cap Fits 6" - 10" RD or 32" Linear	50 Pcs	1.62 / EA
DP10-16	Duct Cap Fits 10" - 16" RD or 50" Linear	50 Pcs	1.83 / EA
DP16-24	Duct Cap Fits 16" - 24" RD or 74" Linear	50 Pcs	4.04 / EA
DP24-38	Duct Cap Fits 24" - 38" RD or 80" Linear	25 Pcs	5.25 / EA
DP38-150	Duct Cap Fits 38" - 150" RD or 490" Linear	2 Pcs	41.75 / EA

Bulk Quantities Available -Please Call

DUCT SHRINKWRAP

<u>Code</u>	<u>Duct Wrap -Rolls</u>	<u>Packaged</u>	<u>List Price</u>
DS24	24" x 200' Ft Wrap	6 Per Box	64.62 Roll
DS36	36" x 200' Ft Wrap	1 Per Box	91.92 Roll
DS48	48" x 200' Ft Wrap	1 Per Box	96.92 Roll



Inland Metal

Sheet Metal Manufactures & Custom Fabricators
Wholesale Heating Supplies

Prices subject to change
without notice

FLAT/ROUND PIPE DAMPER HARDWARE

Code	Category	Item	Description	List Price
TKF	Handle	Twistknob Flat	Tool free, hand-operated flat handle (includes one bearing attached)	3.77
TK15	Handle	Twistknob 1.5"	Tool free, hand-operated 1.5" stand-off handle	3.92
TK2	Handle	Twistknob 2"	Tool free, hand-operated 2" stand-off handle	4.08
ELH15	Handle	Everlock	Absolute locking handle with thumb trigger, 1.5" sto, 7 stops	4.38
ELH2	Handle	Everlock 2.0	Absolute locking handle, thumb trigger, 2"sto, 9 stops	4.77
B-Snap	Bearing	B-Snap	Snap-in bearing (Low or Meium pressure applications)	0.62
B-Long	Bearing	B-Long	Long, snap-in bearings for lined duct (Low or Medium pressure applications)	1.15
B-300	Bearing	B-300	Open clip-on mid bearings (High or Negative pressure applications include e-clip & washer)	1.15
B-330	Bearing	B-330	Closed clip-on end bearings (High or Negative pressure applications include e-clip & washer)	1.15
RD06	Disc	Rd-06	Stackable 6" damper disc with built in channel for rod	4.62
RD07	Disc	Rd-07	Stackable 7" damper disc with built in channel for rod	5.38
RD08	Disc	Rd-08	Stackable 8" damper disc with built in channel for rod	5.92
RD09	Disc	Rd-09	Stackable 9" damper disc with built in channel for rod	6.85
RD10	Disc	Rd-10	Stackable 10" damper disc with built in channel for rod	7.69
RD12	Disc	Rd-12	Stackable 12" damper disc with built in channel for rod	8.92
RD14	Disc	Rd-14	Stackable 14" damper disc with built in channel for rod	11.85
RD16	Disc	Rd16	Stackable 16" damper disc with built in channel for rod	15.30

Inland Metal

Sheet Metal Manufactures & Custom Fabricators
Wholesale Heating Supplies

Prices subject to change
without notice